

**Yaretska N. O.**

candidate of physical and mathematical sciences,  
doctor of philosophy, senior lecturer of  
department of higher mathematics and computer applications,  
Khmelnysky National University

**Gripinska N. V.**

candidate of physical and mathematical sciences,  
docent of department of higher mathematics  
and computer applications,  
Khmelnysky National University

**RESEARCH OF CONTACT INTERACTION OF PRELIMINABLY  
STRESSED ANNULAR STAMP AND HALF-SPACE WITH INITIAL  
(RESIDUAL) STRESSES (CASE OF EQUAL ROOTS)**

**ИССЛЕДОВАНИЕ КОНТАКТНОГО ВЗАИМОДЕЙСТВИЯ  
ПРЕДВАРИТЕЛЬНО НАПРЯЖЕННОГО КОЛЬЦЕВОГО ШТАМПА И  
ПОЛУПРОСТРАНСТВА С НАЧАЛЬНЫМИ (ОСТАТОЧНЫМИ)  
НАПРЯЖЕНИЯМИ (СЛУЧАЙ РАВНЫХ КОРНЕЙ)**

**Summary.** The article is devoted to the study of the contact interaction of a prestressed ring stamp and a half-space (base) with initial (residual) stresses without taking friction forces into account. The problem is solved for the case of equal roots of the resolving equation. The study is presented in a general form for the theory of large initial (finite) deformations and two versions of the theory of small initial deformations in the framework of the linearized theory of elasticity for an arbitrary structure of the elastic potential.

**Keywords:** linearized theory of elasticity, contact interaction, annular stamp, half-space, harmonic potential, elastic bodies, theory of large initial (finite) deformations, theory of small initial deformations.

**Аннотация.** Статья посвящена исследованию контактного взаимодействия предварительно напряженного кольцевого штампа и полупространства (основы) с начальными (остаточными) напряжениями без учета сил трения. Задача решена для случая равных корней разрешающего уравнения. Исследование представлено в общем виде для теории больших начальных (конечных) деформаций и двух вариантов теории малых начальных деформаций в рамках линейризованной теории упругости при произвольной структуре упругого потенциала.

**Ключевые слова:** линейризованная теория упругости, контактное взаимодействие, кольцевой штамп, полупространство, гармонический потенциал, упругие тела, теория больших начальных (конечных) деформаций, теория малых начальных деформаций.

**Problem statement.** Contact problems are an important part of the mechanics of a deformable solid and form the theoretical basis for calculations for the contact strength, stiffness and wear resistance of mobile and fixed joints.

The applied needs of natural science, modern technology and the latest technologies in recent decades associated with the necessity to predict the contact behavior of various designs, stimulated the development of various mathematical models and methods of contact mechanics of bodies with different properties [1–4].

One of the important factors in the contact interaction of bodies is the influence of initial (residual) stresses. Despite a significant achievement in the development of contact problems, nevertheless the issue of taking into account the initial (residual) stresses in the contact interaction has remained almost completely undeveloped until recently. There is known, that almost all elements of the construction have initial stress. It can be caused by various reasons, for example, by technological operations conducted in the manufacture of a variety of materials or by assembly of a structure. In the case of composite materials, the initial stresses, as a rule, correspond to stresses along the reinforcing elements. In the earth's crust, they are formed due to the action of gravitational forces and technical processes. They must be taken into account when

solving the problems of deformation of soils (especially frozen ones). In addition, in elastoplastic bodies, internal residual stresses can also be present after removal of loads.

In the general case, consideration of the initial (residual) stresses requires the using of the apparatus of the nonlinear theory of elasticity [4, 5], but for the sufficiently large initial (residual) loads, one can confine ourselves to its linearized version [6–10].

Allowance of initial (residual) stresses within the linearized theory of elasticity leads to a new formulation of the problems of interaction of deformable solids, which significantly differ from the formulation of the problems of the classical theory of elasticity. Taken into account the problems when the initial (residual) stresses of the system of basic differential equations, the expressions of determining the components of the tensors of the stress-strain state and the structure of the boundary conditions differ from the corresponding systems of equations and expressions of the classical theory of elasticity, nevertheless, in their structure and nature they are similar to ordinary contact problems. Thus, from the above, it follows the possibility of using many fundamental results and methods of the linear theory of elasticity.

**Analysis of recent research and publications.** Linearized theory of elasticity for the bodies with initial (residual) stresses as the linearization of the nonlinear theory of elasticity [4, 5] was first proposed in monograph [11].

The fundamental results of the linearized theory of elasticity were obtained by academician Gusem A.N. [6 – 10, 12 – 14]. For the first time, he solved a number of contact problems for compressible and incompressible bodies by one of the most effective approaches for materials with an arbitrary form of elastic potential and homogeneous initial (residual) stresses. This approach is based on the theory of the function of a complex variable for plane problems and potential theory for spatial problems. Further development of the theory of contact interaction of bodies with initial (residual) stresses was obtained in the works [3, 6-10, 12 – 19]. A general analysis of the main methods and the best known results in all directions of the

contact interaction of bodies with initial (residual) stresses is presented in review articles [15, 19].

The first equations of the linearized theory of elasticity of deformable bodies [10] were obtained by linearizing the basic relations of the nonlinear theory, taking into account the physical characteristics of the materials; these results are obtained for small subcritical deformations in Lagrangian coordinates, which coincide with the Cartesian coordinates in the undeformed state. Later the main relations were written in curvilinear coordinates using the tensor analysis [20]; equations in displacements were also obtained, for which in a homogeneous subcritical state some methods for their solution are considered.

A modern analysis of the approaches to constructing theories and basic results that are applied to the three-dimensional linearized theory of elasticity of deformable bodies and the three-dimensional linearized theory of the propagation of elastic waves in bodies with initial (residual) stresses is presented by the generalizing publication, respectively [8]. With the using of approaches of the modern type [8], modern analysis of the results is performed for a wide range of problems of the linearized mechanics of deformed bodies, namely: 1) For problems of the contact interaction of elastic bodies with initial (residual) stresses [15, 19]; 2) For the stability theory of the local equilibrium state of black rocks [13]; 3) For exact solutions of plane mixed problems of linearized mechanics of deformable bodies [9]; 4) For non-destructive ultrasonic methods for determining stresses in solids [14].

There are also a number of other generalizing publications about linearized mechanics. Moreover, the works mentioned above are only fully or partially related to the subject matter of this article. More widely the history of development and the range of problems of the linearized theory of elasticity are presented in [19].

Thus, the development of effective methods for calculating the stress-strain state with allowance for the initial (residual) deformations within the framework of the linearized theory of elasticity is an actual and important scientific and technical problem.

**Isolation of previously unresolved parts of a common problem.** Today, in accordance to the problems related to contact problems for elastic bodies, results have been obtained on a wide range of issues. They are represented by works [6, 7, 12, 16, 17, 21, 22]. There are also a number of general publications [5, 23, 24], which are fully or partially related to the subject of this study. Despite significant achievements, the number of studies on the contact interaction of prestressed bodies is relatively small.

A rather detailed review of the work of rigid stamps (including ring ones) associated with contact pressure in the case of absence of initial stresses is given in the monograph [25].

The contact interaction of rigid and elastic stamps with prestressed bodies is presented in [3, 6, 7, 12, 16, 17, 21]. Moreover, either the elastic potentials of a particular structure are considered, but also the problem is considered in a general form for compressible (incompressible) bodies with the potential of an arbitrary structure on the basis of the linearized theory of elasticity.

The solution of an axisymmetric contact problem on the pressure of a rigid ring stamp of a complex configuration on an elastic layer with initial stresses is considered in [16]. The influence of initial stresses on the contact interaction of a rigid ring stamp on an elastic half-space with initial (residual) stresses is presented in [18].

**Purpose of the article.** In this paper, for the first time (residual) stresses, for the bodies with initial (residual) stresses [6, 7, 10, 12, 15], the problem of the pressure of a prestressed elastic ring stamp was first considered for a half-space with initial (residual) stresses without allowance for friction forces for equal roots resolving equation [7]. The investigation is carried out in a general form for compressible and incompressible bodies for the theory of large initial deformations and for two versions of the theory of small initial deformations for an arbitrary structure of the elastic potential.

The concept of research of this article is that taking into account the influence of initial stresses in bodies on the law of distribution of the contact characteristics of elastic bodies at the points of their interaction can allow for more effective

consideration of the wear resistance of materials by properly estimating their strength reserves. Also, it can sufficiently reduce their material consumption, while retaining the necessary functional characteristics of materials.

Therefore, to ensure the above, the methodology for solving the task is divided into two stages - analytical and numerical. The result of the analytical stage was the formulation of the ratios of the components of the stress-strain state in the contact zone, which are characteristic for potentials of arbitrary structure. A numerical analysis is given for a potential of the harmonic type. Plots of stresses and displacements in the contact area are constructed.

### **Presentation of the main material.**

**1. Basic relationships.** We will distinguish such states of bodies with initial (residual) stresses: natural (initial stresses absent), initial, and disturbed state. All quantities, the last, consist of the sum of the values of the initial state and the corresponding perturbations. Since the perturbations are assumed to be smaller than the corresponding values of the initial state, the investigations are carried out within the framework of the linearized theory of elasticity [6, 7, 10, 12, 15].

For the study, we use the coordinates of the initial deformed state  $(y_1, y_2, y_3)$ , which are related to the Lagrange coordinates  $(x_1, x_2, x_3)$  (natural state):  $y_i = \lambda_i x_i$  ( $i = \overline{1,3}$ ). Here  $\lambda_i$  ( $i = \overline{1,3}$ ) are the elongation coefficients that determine the movement of the initial state  $\lambda_i = \text{const}$  ( $i = \overline{1,3}$ ). The  $y_3$  axis is directed along the normal to the contact area.

We assume that the initial states in the ring stamp and the half-space are homogeneous and equal, and the elastic potentials are twice continuously differentiable functions of the algebraic invariants of the Green's deformation tensor [7, 24]. In this case the relations are:

$$y_m = x_m + U_m^0, \quad U_m^0 = \delta_{mi} (\lambda_m - 1) \lambda_i^{-1} y_i.$$

Then the basic equation in displacements for compressible bodies has the form:

$$L'_{m\alpha} U_\alpha = 0, \quad L'_{m\alpha} = \omega'_{ij\alpha\beta} \partial^2 / \partial y_i \partial y_\beta, \quad (i, m, \alpha, \beta = \overline{1,3}), \quad (1)$$

and for incompressible bodies together with the incompressibility condition:

$$L'_{m\alpha}U_\alpha + q'_{am}\partial p'/\partial y_\alpha = 0, L'_{m\alpha} = \kappa'_{im\alpha\beta}\partial^2/\partial y_i\partial y_\beta, q'_{ij}\partial U_j/\partial y_i = 0, q'_{ij} = \lambda_i q_{ij}, (i, j, m, \alpha, \beta = \overline{1, 3}). \quad (2)$$

Expressions for determining the components of the stress tensor for compressible and incompressible bodies are written as:

$$Q'_{ij} = \omega'_{ij\alpha\beta}\frac{\partial U_\alpha}{\partial y_\beta}, Q'_{ij} = \kappa'_{ij\alpha\beta}\frac{\partial U_\alpha}{\partial y_\beta} + q'_{ij}p, \omega'_{ij\alpha\beta} = \frac{\lambda_i\lambda_\beta}{\lambda_1\lambda_2\lambda_3}\omega_{ij\alpha\beta}, \kappa'_{ij\alpha\beta} = \frac{\lambda_i\lambda_\beta}{\lambda_1\lambda_2\lambda_3}\kappa_{ij\alpha\beta},$$

where  $\omega'_{im\alpha\beta}, \kappa'_{im\alpha\beta}$  - the components of the fourth order tensor of the elastic moduls,

$$p = (\lambda_1 q_1)^{-1} \left\{ \left[ \tilde{\kappa}_{1111} - \lambda_1 q_1 (\lambda_3 q_3)^{-1} (\tilde{\kappa}_{1133} + \tilde{\kappa}_{1313}) \right] \Delta_1 + \tilde{\kappa}_{3113} \partial^2/\partial y_3^2 \right\} \partial^2/\partial y_3^2 \tilde{\chi}.$$

For homogeneous initial stresses  $S_0^{11} = S_0^{22} \neq 0; S_0^{33} = 0; \lambda_1 = \lambda_2 \neq \lambda_3$ , we express the roots of equations (1), (2) in terms of the roots of the differential equation:

$$(\Delta_1 + \xi_2'^2 \partial^2/\partial y_3^2)(\Delta_1 + \xi_3'^2 \partial^2/\partial y_3^2)\tilde{\chi} = 0, \quad (3)$$

where  $\Delta_1 = \partial^2/\partial r^2 + r^{-1}\partial/\partial r$ .

Taking into account the condition of the existence of a unique solution of the linearized theory of elasticity for compressible and incompressible bodies, two versions of the representation of the general solution (3) are possible:

1) The case of equal roots ( $\xi_2'^2 = \xi_3'^2$ ):

$$\tilde{\chi} = \tilde{\chi}_1 + y_3 \tilde{\chi}_2, (\Delta_1 + \xi_2'^2 \partial^2/\partial y_3^2)\tilde{\chi}_1 = 0, (\Delta_1 + \xi_2'^2 \partial^2/\partial y_3^2)\tilde{\chi}_2 = 0 \quad (4)$$

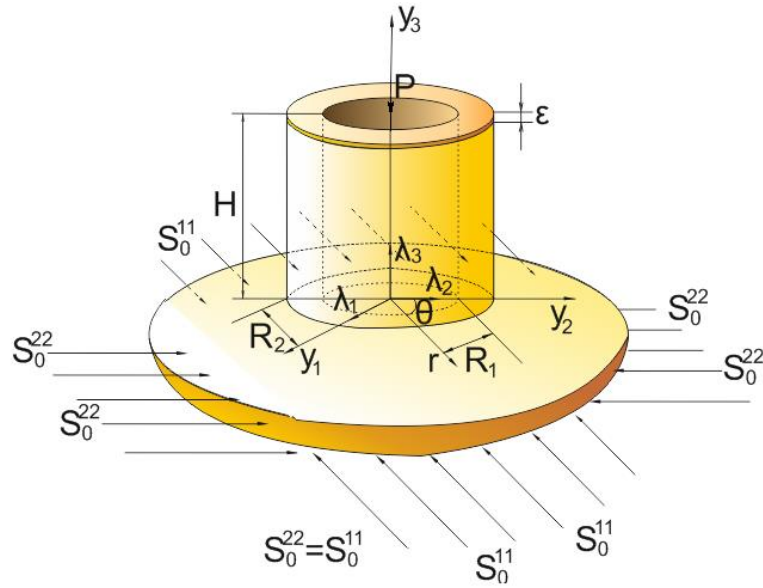
2) The case of unequal roots ( $\xi_2'^2 \neq \xi_3'^2$ ):

$$\tilde{\chi} = \tilde{\chi}_1 + \tilde{\chi}_2, (\Delta_1 + \xi_2'^2 \partial^2/\partial y_3^2)\tilde{\chi}_1 = 0, (\Delta_1 + \xi_3'^2 \partial^2/\partial y_3^2)\tilde{\chi}_2 = 0. \quad (5)$$

In this study we dwell in detail only he case of equal roots of the resolving equation (3).

**2. Formulation of the problem and border conditions.** Let the finite prestressed ring stamp with a flat base, whose geometric axis of symmetry coincides with the  $y_3$  axis of the cylindrical coordinate system  $(r, \theta, y_3)$ , which is directed into the half-space (Fig. 1) and presses on the half-space with the force  $P$ , after the initial deformed state.  $R_1, R_2$  – internal and external radii of the stamp. We assume that the external load is applied only to the free end of the resilient stamp. Under the action of the load, all points on the end of the stamp move in the direction of the symmetry axis  $y_3$  by the same amount  $\varepsilon$ . We assume that the surfaces outside the contact region

remain free from the influence of external forces, and in the contact zone of displacement and stress, they are continuous.



**Fig. 1. Pressure of a prestressed annular stamp on a half-space with initial (residual) stresses.**

The materials of the contacting bodies are assumed to be isotropic compressible or incompressible with an arbitrary structure of the elastic potential. In the case of orthotropic materials, it is assumed that the elastic-equivalent directions coincide with the directions of the coordinate axes ( $y_1, y_2, y_3$ ).

The quantities that relate to the elastic stamp will be written with the superscript (1), and the quantities that relate to the pre-stressed half-space with the initial (residual) stresses - with the superscript (2).

In the system of circular cylindrical coordinates  $(r, \theta, z_i)$ , where  $z_i = \nu_i^{-1} y_3$ ,  $\nu_i = \sqrt{n_i}$ , ( $i=1,2$ ),  $n_1 = \xi_2'^2$ ,  $n_2 = \xi_3'^2$  such a formulation corresponds to the boundary conditions:

1) at the end of the elastic stamp  $z_1 = H\nu_1^{-1}$

$$U_3^{(1)} = -\varepsilon, \quad Q_{3r}^{(1)} = 0 \quad (R_1 < r < R_2) \quad (6)$$

2) on the boundary of an elastic half-space in the region of contact  $z_1=0$ :

$$U_3^{(1)} = U_3^{(2)}; \quad \tilde{Q}_{33}^{(1)} = \tilde{Q}_{33}^{(2)}; \quad \tilde{Q}_{3r}^{(1)} = \tilde{Q}_{3r}^{(2)} = 0 \quad (R_1 < r < R_2) \quad (7)$$

3) on the boundary of the elastic half-space outside the contact region  $z_I=0$ :

$$\tilde{Q}_{33}^{(2)} = 0, \quad U_3^{(2)} = 0, \quad \tilde{Q}_{3r}^{(2)} = 0 \quad (0 < r < R_1 \quad R_2 < r < \infty) \quad (8)$$

4) on the outer side surface of the elastic stamp  $r=R_2$ :

$$\tilde{Q}_{rr}^{(1)} = 0, \quad \tilde{Q}_{3r}^{(1)} = 0 \quad (0 \leq z_1 \leq H\nu_1^{-1}) \quad (9)$$

5) on the inner side surface of the elastic stamp  $r=R_1$ :

$$\tilde{Q}_{rr}^{(1)} = 0, \quad \tilde{Q}_{3r}^{(1)} = 0 \quad (0 \leq z_1 \leq H\nu_1^{-1}) \quad (10)$$

The condition of equilibrium, which establishes the relationship between the draft of the butt and the resultant load  $P$ , is:

$$P = -2\pi \int_{R_1}^{R_2} r Q_{33}^{(2)}(0, r) dr \quad (11)$$

To determine the stress-strain state in an elastic ring stamp with initial (residual) stresses, we use the linearized equations (1) - (2), from which the expressions for the components of the displacement vector and the stress tensor for compressible and incompressible bodies follow. Then the general solution (4) for the case of equal roots  $n_1 = n_2$  of the resolving equation (3) is taken in the form

$$\begin{aligned} \chi &= \frac{\varepsilon \nu_1 z_1 (1 + \nu_1 z_1)}{(R_1 - R_2)(1 - m_2)} + \sum_{k=1}^{\infty} \left\langle \frac{\nu_1 z_1 \gamma_k \tilde{B}_k (1 + \nu_1 z_1)}{R_1 - R_2} \left\{ \frac{1 + m_2}{1 - m_2} f_1(R_1, R_2) + \right. \right. \\ &+ \left. \frac{I_0(\gamma_k \nu_1 R_1) - I_0(\gamma_k \nu_1 R_2)}{R_1 + R_2} \left( \frac{\nu_1 \theta_1}{1 - m_2} - \frac{3r^2 - 2z_1^2}{3} \right) \right\} + (\tilde{A}_k + \nu_1 z_1 \tilde{B}_k) I_0(\gamma_k \nu_1 r) \sin(\gamma_k \nu_1 z_1) + \\ &\left. + J_0(\alpha_k z_1) (\tilde{S}_2(\alpha_k z_1) + \nu_1 z_1 \tilde{S}_3(\alpha_k z_1)) \right\rangle N_k, \\ \chi_1 &= \frac{\varepsilon \nu_1 z_1}{(R_1 - R_2)(1 - m_2)} + \sum_{k=1}^{\infty} \left\langle \frac{\nu_1 z_1 \gamma_k \tilde{B}_k}{R_1 - R_2} \left\{ \frac{1 + m_2}{1 - m_2} f_1(R_1, R_2) + \right. \right. \\ &+ \left. \frac{I_0(\gamma_k \nu_1 R_1) - I_0(\gamma_k \nu_1 R_2)}{R_1 + R_2} \left( \frac{\nu_1 \theta_1}{1 - m_2} - \frac{3r^2 - 2z_1^2}{3} \right) \right\} + \tilde{A}_k I_0(\gamma_k \nu_1 r) \sin(\gamma_k \nu_1 z_1) + J_0(\alpha_k z_1) \tilde{S}_2(\alpha_k z_1) \right\rangle N_k \\ \chi_2 &= \frac{\varepsilon \nu_1 z_1}{(R_1 - R_2)(1 - m_2)} + \sum_{k=1}^{\infty} \left\langle \frac{\nu_1 z_1 \gamma_k \tilde{B}_k}{R_1 - R_2} \left\{ \frac{1 + m_2}{1 - m_2} f_1(R_1, R_2) + \right. \right. \\ &+ \left. \frac{I_0(\gamma_k \nu_1 R_1) - I_0(\gamma_k \nu_1 R_2)}{R_1 + R_2} \left( \frac{\nu_1 \theta_1}{1 - m_2} - \frac{3r^2 - 2z_1^2}{3} \right) \right\} + \tilde{B}_k I_0(\gamma_k \nu_1 r) \sin(\gamma_k \nu_1 z_1) + J_0(\alpha_k z_1) \tilde{S}_3(\alpha_k z_1) \right\rangle N_k, \end{aligned}$$

$$\text{where } \theta_1 = \frac{4Hm_1(1+H)}{v_1^3} + \frac{R_1^2 + R_1R_2 + R_2^2}{3} - \frac{2H^2}{n_1},$$

$$f_1(R_1, R_2) = -R_1 I_0(\gamma_k v_1 R_1) + \frac{\pi R_1}{2} L_0(\gamma_k v_1 R_1) I_1(\gamma_k v_1 R_1) - \frac{\pi R_1}{2} L_1(\gamma_k v_1 R_1) I_0(\gamma_k v_1 R_1) +$$

$$+ R_2 I_0(\gamma_k v_1 R_2) - \frac{\pi R_2}{2} L_0(\gamma_k v_1 R_2) I_1(\gamma_k v_1 R_2) + \frac{\pi R_2}{2} L_1(\gamma_k v_1 R_2) I_0(\gamma_k v_1 R_2),$$

$$\tilde{S}_2 = \tilde{E}_k sh(\alpha_k z_1) + \tilde{F}_k ch(\alpha_k z_1), \quad \tilde{S}_3 = sh(\alpha_k z_1) + \tilde{M}_k ch(\alpha_k z_1), \quad \tilde{M}_k = -cth(\alpha_k H v_1^{-1}), \quad \tilde{F}_k = -s_0 \alpha_k^{-1},$$

$$\tilde{E}_k = Hcth^2(\alpha_k H v_1^{-1}) - \tilde{F}_k cth(\alpha_k H v_1^{-1}) - H, \quad \tilde{A}_k = \left( \frac{R s_0 H^2 (I_0(\gamma_k v_1 R_1) - I_0(\gamma_k v_1 R_2))}{2n_1 (R_2^2 - R_1^2) I_1(\gamma_k v_1 R)} - \frac{s_0}{v_1 \gamma_k^2} + \frac{H}{2} \right) \tilde{B}_k,$$

$$\tilde{B}_k = \frac{\alpha_k}{2} (R_2^2 - R_1^2) J_0(\alpha_k R) \{ H \alpha_k (\tilde{c}_0 sh(\alpha_k H v_1^{-1}) + \tilde{c}_1 (1 - ch(\alpha_k H v_1^{-1}))) (1 - s_0 sh(\alpha_k H v_1^{-1})) +$$

$$+ (1 - ch^2(\alpha_k H v_1^{-1})) (v_1 (\tilde{c}_0 + \tilde{c}_2 - \tilde{c}_1) - \tilde{c}_0 s_0) \} / \{ \gamma_k (ch^2(\alpha_k H v_1^{-1}) - 1) [H(1 - \tilde{c}_0 + H(3\tilde{c}_0 + 2\tilde{c}_2 -$$

$$- 4\tilde{c}_1)) (I_0(\gamma_k v_1 R_1) - I_0(\gamma_k v_1 R_2)) + \tilde{c}_2 n_1 (R_2^2 - R_1^2) I_0(\gamma_k v_1 R) \},$$

$$R = (R_2 - R_1)H(r - R_1) - (R_2 - R_1)H(r - R_2) + \delta(R_1)(2R_1 - R_2) + \delta(R_1)R_2,$$

$H(x)$  – the Heaviside function,  $\delta(x)$  – the Dirac function,  $L_\nu(x)$  – the modified Struve function,  $J_\nu(x)$ ,  $I_\nu(x)$  – the Bessel functions of the real and imaginary argument, respectively.

$$m_1 = \begin{cases} (\omega'_{111} n_1 - \omega'_{313})(\omega'_{133} + \omega'_{1313})^{-1}; \\ \lambda_1 q_1 n_1 (\lambda_3 q_3)^{-1}; \end{cases} \quad m_2 = \begin{cases} (\omega'_{133} - \omega'_{1313})(\omega'_{133} + \omega'_{1313})^{-1}, \\ 1, \end{cases} \quad s_0 = \frac{(1+m_2)}{(1+m_1)},$$

$$\tilde{c}_0 = \begin{cases} \omega'_{111} \omega_{1122}^{-1}, \\ \lambda_1 q_1 (\kappa'_{133} + \kappa'_{1313})(\lambda_3 q_3 \kappa'_{1122})^{-1}, \end{cases} \quad \tilde{c}_1 = \begin{cases} m_1 \lambda_3 \omega'_{133} (\omega'_{1122} n_1)^{-1}, \\ (\kappa'_{133} m_1 - \kappa'_{313})(\kappa'_{1122} n_1)^{-1}, \end{cases} \quad \tilde{c}_2 = \begin{cases} \lambda_3 \omega'_{133} (m_2 - 1)(\omega'_{1122} n_1)^{-1}, \\ -\kappa'_{313} (\kappa'_{1122} n_1)^{-1}, \end{cases}$$

Then we obtain formulas for the displacement components for compressible and incompressible bodies:

$$U_r^{(1)} = - \sum_{k=1}^{\infty} \left\{ 6\tilde{C}_0^{(k)} r (v_1^{-1} + 2z_1) + \gamma_k v_1 I_1(v_1 \gamma_k r) \left[ (\tilde{A}_k + v_1 z_1 \tilde{B}_k) \gamma_k \cos(\gamma_k v_1 z_1) + \tilde{B}_k \sin(\gamma_k v_1 z_1) \right] - \right.$$

$$\left. - \alpha_k J_1(\alpha_k r) \left[ \alpha_k v_1^{-1} (\tilde{S}_4(\alpha_k z_1) + v_1 z_1 \tilde{S}_5(\alpha_k z_1)) - \tilde{S}_3(\alpha_k z_1) \right] \right\} N_k$$

$$U_3^{(1)} = \frac{\varepsilon}{R_1 - R_2} + \sum_{k=1}^{\infty} \left\{ 12m_1 \tilde{C}_0^{(k)} z_1 v_1^{-1} (v_1^{-1} + z_1) + (1 - m_2) v_1^{-1} \left[ \tilde{A}_0^{(k)} + 3\tilde{C}_0^{(k)} (r^2 - 2z_1^2) \right] + \right. \quad (12)$$

$$+ \gamma_k I_0(\gamma_k v_1 r) \left[ (\tilde{A}_k + v_1 z_1 \tilde{B}_k) m_1 \gamma_k \sin(\gamma_k v_1 z_1) + (1 - m_2) \tilde{B}_k \cos(\gamma_k v_1 z_1) \right] -$$

$$\left. - \alpha_k n_1^{-1} J_0(\alpha_k r) \left[ m_1 \alpha_k (\tilde{S}_2(\alpha_k z_1) + z_1 v_1 \tilde{S}_3(\alpha_k z_1)) + (m_2 - 1) v_1 \tilde{S}_5(\alpha_k z_1) \right] \right\} N_k.$$

And the components of the stress vector for  $y_3 = const$  and  $r = const$ , respectively:

$$\begin{aligned}
Q_{33}^{(1)} &= C_{44} \sum_{k=1}^{\infty} \left\{ 12\tilde{C}_0^{(k)} \left[ (1+m_1)l_1(v_1^{-1}+z_1) + (1+m_2)l_2z_1 \right] + \gamma_k^2 v_1^2 I_0(\gamma_k v_1 r) \left[ (1+m_1)l_1 \gamma_k (\tilde{A}_k + \right. \right. \\
&\quad \left. \left. + v_1 z_1 \tilde{B}_k) \cos(\gamma_k v_1 z_1) + (1+m_2)l_2 \tilde{B}_k \sin(\gamma_k v_1 z_1) \right] - \right. \\
&\quad \left. -\alpha_k^2 J_0(\alpha_k r) \left[ (1+m_1)l_1 \alpha_k v_1^{-1} (\tilde{S}_4(\alpha_k z_1) + v_1 z_1 \tilde{S}_5(\alpha_k z_1)) + (1+m_2)l_2 \tilde{S}_3(\alpha_k z_1) \right] \right\} N_k \\
Q_{3r}^{(1)} &= C_{44} \sum_{k=1}^{\infty} \left\{ -6\tilde{C}_0^{(k)} r (1+m_2) v_1^{-1} + \gamma_k^2 v_1 I_1(\gamma_k v_1 r) \left[ (1+m_1) \gamma_k (\tilde{A}_k + v_1 z_1 \tilde{B}_k) \sin(\gamma_k v_1 z_1) - \right. \right. \\
&\quad \left. \left. - (1+m_2) \tilde{B}_k \cos(\gamma_k v_1 z_1) \right] + \right. \\
&\quad \left. + \alpha_k^2 v_1^{-1} J_1(\alpha_k r) \left[ \alpha_k (1+m_1) (\tilde{S}_2(\alpha_k z_1) + v_1 z_1 \tilde{S}_3(\alpha_k z_1)) + (1+m_2) \tilde{S}_5(\alpha_k z_1) \right] \right\} N_k \quad (13) \\
Q'_{rr} &= -D_{44} \sum_{k=1}^{\infty} \left\{ 6\tilde{C}_0^{(k)} \left[ v_1^{-1} (1 + \tilde{c}_0 - 2\tilde{c}_1) + (3 + \tilde{c}_0 - 4\tilde{c}_1 + 2\tilde{c}_2) z_1 \right] + \right. \\
&\quad \left. + \gamma_k v_1 \left( \gamma_k v_1 I_0(\gamma_k v_1 r) \left[ \gamma_k (\tilde{c}_0 - \tilde{c}_1) (\tilde{A}_k + z_1 v_1 \tilde{B}_k) \cos(\gamma_k z_1 v_1) + \right. \right. \right. \\
&\quad \left. \left. + (\tilde{c}_0 - \tilde{c}_1 + \tilde{c}_2) \tilde{B}_k \sin(\gamma_k z_1 v_1) \right] + (1 - \tilde{c}_0) I_1(\gamma_k v_1 r) r^{-1} \left[ \gamma_k \cos(\gamma_k z_1 v_1) (\tilde{A}_k + z_1 v_1 \tilde{B}_k) + \tilde{B}_k \sin(\gamma_k z_1 v_1) \right] \right) - \\
&\quad \left. - \alpha_k \left( \alpha_k J_0(\alpha_k r) \left[ \alpha_k v_1^{-1} \left\{ \tilde{c}_0 \tilde{S}_4(\alpha_k z_1) - \right. \right. \right. \right. \\
&\quad \left. \left. \left. - \tilde{c}_1 \tilde{S}_2(\alpha_k z_1) \right\} + (\tilde{c}_0 - \tilde{c}_1 + \tilde{c}_2) \tilde{S}_3(\alpha_k z_1) \right] + (1 - \tilde{c}_0) J_1(\alpha_k r) r^{-1} \left[ \alpha_k v_1^{-1} \tilde{S}_4(\alpha_k z_1) + \tilde{S}_3(\alpha_k z_1) \right] \right) \right\} N_k,
\end{aligned}$$

where  $\tilde{S}_4 = \tilde{E}_k ch(\alpha_k z_1) + \tilde{F}_k ch(\alpha_k z_1)$ ,  $\tilde{S}_5 = ch(\alpha_k z_1) + \tilde{M}_k sh(\alpha_k z_1)$ ,

$$\tilde{A}_0^{(k)} = \frac{v_1}{(R_1 - R_2)(1 - m_2)} \sum_{k=1}^{\infty} \left\{ (1 + m_2) f_1(R_1, R_2) + \frac{v_1 \theta_1 (I_0(\gamma_k v_1 R_1) - I_0(\gamma_k v_1 R_2))}{R_1 + R_2} \right\} \gamma_k \tilde{B}_k,$$

$$\tilde{C}_0^{(k)} = \frac{v_1}{3(R_2^2 - R_1^2)} \sum_{k=1}^{\infty} \{ I_0(\gamma_k v_1 R_1) - I_0(\gamma_k v_1 R_2) \} \gamma_k \tilde{B}_k.$$

$$D_{44} = \begin{cases} \omega'_{1122}, \\ \kappa'_{1122}. \end{cases} \quad C_{44} = \begin{cases} \omega'_{1313}, \\ \kappa'_{1313}. \end{cases}$$

$$l_1 = \begin{cases} \omega'_{1313}^{-1} (\omega'_{1331} + (\omega'_{1313} - \omega'_{1331})(\omega'_{1133} + \omega'_{1313})(\omega'_{1111} n_1 + \omega'_{1133})^{-1}); \\ \kappa'_{1313}^{-1} (\kappa'_{1331} + \lambda_3 q_3 (\kappa'_{1313} - \kappa'_{1331})(\lambda_3 q_3 + \lambda_4 q_1 n_1)^{-1}); \end{cases}$$

$$l_2 = \begin{cases} (\omega'_{3333} (m_1 + m_2 - 1) - \omega'_{1133} n_1)(n_1 \omega'_{1313} (1 + m_2))^{-1}, \\ (\kappa'_{3333} m_1 + (\lambda_1^{-1} q_1^{-1} \lambda_3 q_3 \kappa'_{1111} - 2\kappa'_{1133} - \kappa'_{1313}) n_1 - 3\lambda_1^{-1} q_1^{-1} \lambda_3 q_3 \kappa'_{3113})(2n_1 \kappa'_{1313})^{-1}. \end{cases}$$

Stress-strain state in the elastic half-space with initial (residual) voltage equal to root ( $n_1=n_2$ ) is defined by harmonic function Hankel integrals. Having satisfied the third condition (7), the third - (8), after a number of transformations we have

$$\begin{aligned} U_3^{(2)} &= -\frac{1}{\omega_3} \int_0^\infty \frac{F(\eta)}{\eta} J_0(\eta r) d\eta, \quad U_r^{(2)} = \omega_1 \int_0^\infty \frac{F(\eta)}{\eta} J_1(\eta r) d\eta, \\ Q_{33}^{(2)} &= \frac{\omega_3}{R_2 - R_1} \int_0^\infty F(\eta) J_0(\eta r) d\eta, \quad Q_{3r}^{(2)} = 0, \end{aligned} \quad (14)$$

where  $\omega_3 = C_{44} l_1 (1 + m_1)(s - s_0)$ ,  $\omega_1 = s_0 - 1$ ,  $s = s_0 \frac{l_2}{l_1}$ .

### 3. Materials and Methods.

Using the solution for the cylinder (12) – (13) and satisfying the second condition (6), the second condition (9) and the second condition (10), we find the eigenvalues of the problem (6) – (11) (for the case of equal roots  $n_1 = n_2$ ):

$$\gamma_k = \frac{\pi(2k+1)}{H}, \quad \alpha_k = \frac{\mu_k}{R} \quad (J_1(\mu_k) = 0). \quad (15)$$

Having satisfied the first conditions (7) and (8), we define the unknown function  $F(\eta)$  for (14) from the pairwise integral equations (for equal roots):

$$\int_0^\infty \frac{F(\eta)}{\eta} J_0(\eta \kappa) d\eta = f(r) \quad (R_1 < r < R_2), \quad \int_0^\infty F(\eta) J_0(\eta r) d\eta = 0 \quad (0 < r < R_1, R_2 < r < \infty), \quad (16)$$

where  $f(r) = \frac{\omega_3 \varepsilon}{R_2 - R_1} + \sum_{k=1}^\infty \left\langle (\tilde{A}_0^{(k)} + 3r^2 \tilde{C}_0^{(k)}) \frac{1 - m_2}{v_1} + \gamma_k I_0(\gamma_k v_1 r) (1 - m_2) \tilde{B}_k - \frac{\alpha_k}{n_1} J_0(\alpha_k r) (m_1 \alpha_k \tilde{F}_k + v_1 (m_2 - 1)) \right\rangle N_k$ .

The application of the inversion formula to (16) leads to an integral equation of the Fredholm's type of the second kind with respect to the function  $F(\eta)$ , that is

$$\begin{aligned} \frac{F(\eta)}{\eta} &= \frac{2\omega_3}{\pi(R_2 - R_1)} \left\langle \varepsilon + \sum_{k=1}^\infty \left[ (1 + m_2) f_1(R_1, R_2) + \frac{I_0(\gamma_k v_1 R_1) - I_0(\gamma_k v_1 R_2)}{R_2 + R_1} (v_1 \theta_1 - (1 - m_2)(R_2^2 - R_1^2)) \gamma_k \tilde{B}_k \psi_0(\eta, 0) + \right. \right. \\ &\quad \left. \left. + (R_1 - R_2) \left\{ \gamma_k \psi_0(\eta, i \gamma_k v_1 (R_2 - R_1)) (1 - m_2) \tilde{B}_k + \frac{\alpha_k}{n_1} \psi_0(\eta, \mu_k) ((1 - m_2) v_1 - s_0 m_1) \right\} \right] N_k \right\rangle, \end{aligned} \quad (17)$$

where где  $\psi_n(x, y) = \int_0^1 t^n \cos xt \cos ytdt$ ,  $\psi_0(x, y) = \frac{x \sin x \cos y - y \sin y \cos x}{x^2 - y^2}$ ,  $\psi_0(x, 0) = \frac{\sin x}{x}$ ,

$\psi_0(x, iy) = \frac{x \sin x \cosh y + y \sinh y \cos x}{x^2 + y^2}$ ,  $\psi_0(0, iy) = \frac{\sinh y}{y}$ .

Having satisfied the second boundary condition (7), we have

$$\int_0^\infty \frac{F(\eta)}{\eta} (J_1(\eta R_2) - J_1(\eta R_1)) d\eta = C_{44} \sum_{k=1}^\infty \langle 2l_1 (1 + m_1) \gamma_k (I_0(\gamma_k v_1 R_1) - I_0(\gamma_k v_1 R_2)) \tilde{B}_k + \gamma_k^2 v_1 l_1 (1 + m_1) (R_2 I_1(\gamma_k v_1 R_2) -$$

$$-R_1 I_1(\gamma_k \nu_1 R_1) \tilde{A}_k - \alpha_k (R_2 J_1(\alpha_k R_2) - R_1 J_1(\alpha_k R_1)) \left( \frac{l_1}{\nu_1} (1+m_1) \alpha_k \tilde{E}_k + (1+m_2) l_2 \tilde{M}_k \right) \rangle N_k.$$

Having satisfied the first two boundary conditions (7), taking into account the orthogonality of the Bessel functions  $J_0(\mu_k \rho)$  and the values of the integrals

$$\int_0^\infty \eta \psi_n(\eta, \mu_k) d\eta \int_0^1 \rho J_0(\eta \rho) J_0(\mu_k \rho) d\rho = \psi_n(\mu_n, \mu_k), \quad \int_0^\infty \psi_0(\eta, \mu_k) J_1(\eta) d\eta = \psi_0(0, \mu_k),$$

$$\int_0^\infty \psi_0(\eta, 0) J_1(\eta) d\eta = 1,$$

$$\int_{R_1}^{R_2} \rho J_0(\mu_k \rho) J_0(\mu_n \rho) d\rho = \frac{1}{\mu_k^2 - \mu_n^2} (R_1 \mu_n J_0(\mu_k R_1) J_1(\mu_n R_1) - R_1 \mu_k J_0(\mu_n R_1) J_1(\mu_k R_1) -$$

$$- R_2 \mu_n J_0(\mu_k R_2) J_1(\mu_n R_2) + R_2 \mu_k J_0(\mu_n R_2) J_1(\mu_k R_2)).$$

to determine the constants  $N_i$  ( $i = 0, 1, 2, \dots$ ) that occur in (12) - (14) and (16), we obtain an infinite system of algebraic equations

$$\sum_{n=0}^{\infty} \tau_{kn} \chi_n = \beta_k \quad (k = 0, 1, 2, \dots). \quad (18)$$

We represent the coefficients of the system in the form

$$\tau_{kn} = \left\{ (1+m_2) f_1(R_1, R_2) + \frac{I_0(\gamma_n \nu_1 R_1) - I_0(\gamma_n \nu_1 R_2)}{R_1 + R_2} (\nu_1 \theta_1 - (R_2^2 - R_1^2)(1-m_2)) \right\} \gamma_n \tilde{B}_k +$$

$$+ (R_1 - R_2) \left\{ \gamma_n \tilde{B}_k (1-m_2) \psi_0(0, i\gamma_n \nu_1 R) + \frac{\alpha_n}{n_1} \psi_0(0, \mu_n) ((1-m_2)\nu_1 + m_1 s_0) \right\} -$$

$$- C_{44} \left\{ 2(1+m_1) l_1 \gamma_n \tilde{B}_k (I_0(\gamma_n \nu_1 R_1) - I_0(\gamma_n \nu_1 R_2)) + \gamma_n^2 (1+m_1) l_1 \nu_1 (R_2 I_1(\gamma_n \nu_1 R_2) -$$

$$- R_1 I_1(\gamma_n \nu_1 R_1)) \tilde{A}_k - \alpha_n (R_2 J_1(\alpha_n R_2) - R_1 J_1(\alpha_n R_1)) ((1+m_1) l_1 \nu_1^{-1} \alpha_n \tilde{E}_k + (1+m_2) l_2 \tilde{M}_k) \right\},$$

$$\beta_k = \frac{2\omega_3 \varepsilon}{\pi R_1 R_2}.$$

Using the equilibrium condition (11), we establish the relationship between the draft and the resultant load  $P$  in the form

$$P = -\frac{4\omega_3^2 \varepsilon}{(R_2 - R_1) R_2 R_1} \sum_{k=1}^{\infty} \left\{ (I_0(\gamma_k \nu_1 R_1) - I_0(\gamma_k \nu_1 R_2)) (\nu_1 \theta_1 - (R_2^2 - R_1^2)(1-m_2)) \gamma_k - \right.$$

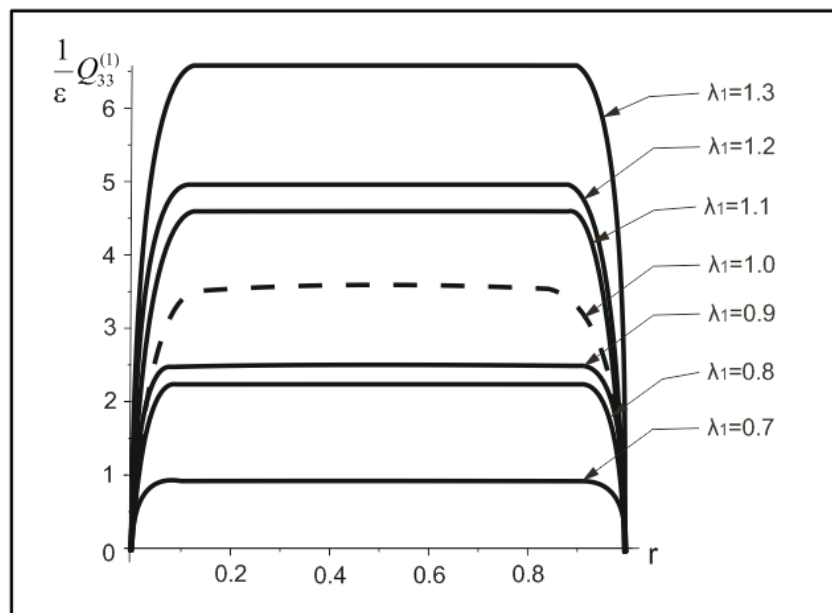
$$\left. - (1-m_2) \nu_1^{-1} sh(\gamma_k \nu_1 (R_2 - R_1)) \right\} \tilde{B}_k + \nu_1^{-1} \sin \mu_k ((m_2 - 1)\nu_1 - s_0 m_1) \rangle N_k.$$

Having determined the unknown constants  $N_i$  ( $i=0, 1, 2, \dots$ ) from the system (18), we calculate the displacements and stresses both in the elastic stamp and in the elastic half-space by the formulas (12) - (14). As a result, we represent the solution in the

form of series through an infinite system of constants, which are determined from the system of linear algebraic equations (18). Moreover, in the system (18) the coefficients  $\beta_k$  and  $\tau_{kn}$  depend on the quantities that determine the structure of the elastic potential, the height of the elastic stamp  $H$ , and the free terms depend only on the roots of the characteristic equation  $n_1, n_2$ .

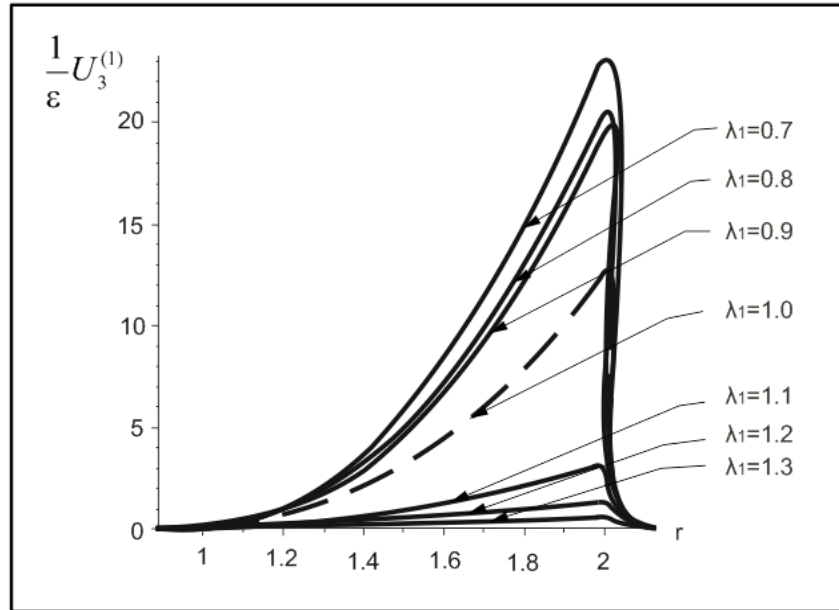
**4. Numerical analysis.** The numerical solution of the system (18) is carried out in the work by the reduction method for the harmonic potential at such values of the parameters:  $R_1=1.0$ ,  $R_2=2.0$ ,  $\varepsilon=10^{-5}$ ,  $E=3.92$ ,  $\sigma=0.47$ ,  $\lambda_1=0.7, 0.8, 0.9, 1.0, 1.1, 1.2, 1.3$ , where  $R_1 \leq r \leq R_2$ . The algorithm for solving this problem is implemented in the form of a computer program in the package Maple 17.

On Fig. 2, 3, there are, respectively, the distribution of the normal contact voltage  $\frac{1}{\varepsilon}Q_{33}$  and displacement  $\frac{1}{\varepsilon}U_3$  under the ring stamp in the contact zone in dimensionless coordinates. Moreover, the values of the elongation coefficients  $\lambda_1$  correspond to the curves from the bottom up ascending  $\lambda_1$ . The dotted curves correspond to a half-space without initial stresses ( $\lambda_1 = 1$ ), and solid curves correspond to initial (residual) stresses.



**Fig. 2. Normal contact voltages. Harmonic potential**

On Fig. 2, the origin along the  $r$  axis corresponds to the value.



**Fig. 3. Normal contact movements. Harmonic potential**

The quantitative characteristics of the influence of the initial (residual) stresses (in percent) with respect to the half-space and the ring stamp without initial stresses are presented in Table 1.

**Table 1. Influence of initial stresses on the contact interaction of an elastic half-space and an elastic ring stamp (potential of a harmonic type).**

$\sigma_{33} / \sigma_0$	Decrease, %				Increase, %			
$\lambda_1$ $r$	0.7	0.8	0.9	1.0	1.1	1.2	1.3	
0.1	72.6	25.5	33.1	0	37.4	48.3	96.9	
0.2	74.3	30.1	37.4	0	28.6	38.7	84.1	
0.3	74.4	30.3	37.7	0	28.0	38.1	83.4	
0.4	74.4	30.4	37.7	0	28.0	38.1	83.3	
0.5	74.4	30.4	37.7	0	28.0	38.1	83.3	
0.6	74.4	30.4	37.7	0	28.0	38.1	83.3	
0.7	74.4	30.3	37.7	0	28.0	38.1	83.4	
0.8	74.3	30.1	37.4	0	28.6	38.7	84.1	
0.9	72.6	25.5	33.1	0	37.4	48.3	96.9	

From Table 1, we can see that the initial (residual) stresses under compression lead to a decrease in the stress force in the elastic ring stamp and half-space, and when stretching, they increase.

**Table 2. Numerical values of the force  $P/\varepsilon$ .**

Потенциал гармонического типа	$\lambda_1$	0,7	0,8	0,9	<b>1</b>	1,1	1,2
	$P/\varepsilon$		0,3458	0,4128	0,4401	<b>0,4521</b>	0,4567

Table 2 also shows the ratio of the numerical values of the force  $P$ , which acts on the upper end of the resilient stamp, for given initial (residual) stresses with a case without initial stresses. The case without initial (residual) stresses is highlighted in table 2 in bold type.

**Conclusions and offers.** On the basis of numerical analysis, it can be seen that the maximum values of contact displacements (Fig. 3) are achieved at points slightly closer to the outer side of the elastic ring stamp in the contact area.

In addition, it follows from numerical studies that, under constant external loading, a change in the elastic potential leads to a change in the character of the distribution of contact stresses and displacements under an elastic ring stamp. And the influence of the initial (residual) stresses on the stress-strain state of the elastic half-space, into which the elastic ring stamp is pressed, is as follows:

4.3.1. The initial (residual) stresses in the half-space and the stamp are reduced in the case of compression ( $\lambda_1 < 1$ ) to a decrease in stress, and in the case of tension ( $\lambda_1 > 1$ ) - to increase (Fig. 2, Table 1);

4.3.2. In the case of displacements (Fig. 3) - on the contrary. With compression ( $\lambda_1 < 1$ ), the initial (residual) stresses in the half-space and stamp cause an increase in displacements in absolute value, and in the case of stretching ( $\lambda_1 > 1$ ) - to reduce them. And for contact movements unsafe are the initial (residual) stresses in the case of compression, and for contact stresses - in the case of stretching;

4.3.3. In the absence of initial (residual) stresses ( $\lambda_1=1$ ), the results obtained coincide with the classical ones [26].

4.3.4. It also follows from Table 2 that for a constant value of the end face of stamp  $\varepsilon$  for a potential of a harmonic type, the presence of initial (residual) stresses leads to the following:

4.3.4.1. In the case of compression ( $\lambda_1 < 1$ ) - the resultant load  $P$  decreases;

4.3.4.2. In the case of stretching ( $\lambda_1 > 1$ ) - the resultant load  $P$  increases.

Analysis of the research results shows that the presence of a prestressed state in the contact interaction of an elastic ring stamp and an elastic half-space makes it possible to regulate the contact of stress and displacement when calculating the design and details of the mechanisms for strength.

Therefore, the practical significance of the findings of the study is that:

1. This research is aimed to solving the spatial axisymmetric static problem of the pressure of an elastic ring stamp on an elastic half-space with allowance for the initial stressed state. The results of the investigations made it possible to formulate the characteristic ratios for the potentials of an arbitrary structure for the components of the stress-strain state in the contact zone;

2. Analytical relations are obtained that reflect the influence of initial stresses on the law of distribution of contact stresses and displacements;

3. The principle of solution proposed in the article can be used to study various isotropic, transversal-isotropic or composite materials in the design of process equipment, columns of buildings and other structures.

The value of the studies carried out is that taking into account the influence of the initial (residual) stresses in the bodies on the law of distribution of the contact characteristics of elastic bodies at the points of their interaction can allow us to take into account, more effectively, the wear resistance of materials by properly estimating their strength reserves. Also, it can sufficiently reduce their material consumption, while retaining the necessary functional characteristics of materials.

Consequently, the observed effect of the initial (residual) stresses is significant and must be taken into account when calculating the strength in structural details.

## **References.**

1. Guz A. N. Effect of Prestresses on the Dispersion of Lamb Waves in a System Consisting of a Viscous Liquid Layer and a Compressible Elastic Layer. / A. N. Guz, A. M. Bagno // International Applied Mechanics. – 2018. – 54(3). – Pp. 249–258. <https://doi.org/10.1007/s10778-018-0877-z>.

2. Babich S. Yu. Bending a Plate on Prestressed Elastic Foundation Under Live Static Load. / S. Yu. Babich, Yu. P. Glukhov // International Applied Mechanics. – 2017. – 53(3) – Pp. 287–299. <https://doi.org/10.1007/s10778-017-0810-x>.

3. Rudnitskii V. B. Interaction Between an Infinite Stringer and Two Identical Prestressed Strips: Contact Problem. / V. B. Rudnitskii, N. N. Dikhtyaruk // International Applied Mechanics. – 2017. – 53(2). – Pp. 149–155. <https://doi.org/10.1007/s10778-017-0800-z>.

4. Rushchitsky J.J. Auxetic metamaterials from the position of mechanics: linear and nonlinear models. / J.J. Rushchitsky // Dopov. Nac. akad. nauk Ukr. –2018. – 7. – Pp. 46-58. doi: <https://doi.org/10.15407/dopovidi2018.07.046>.

5. Hutchinson J. W. Nonlinear Buckling Interaction for Spherical Shells Subject to Pressure and Probing Forces. / J. W. Hutchinson, J.M.T. Thompson // Journal of Applied Mechanics. – 2017. – 84(6). – 061001. doi:10.1115/1.4036355.

6. Гузь А.Н. Смешанные задачи для упругого основания с начальными напряжениями. / А.Н. Гузь, С.Ю. Бабич, Ю.П. Глухов // Германия, Saarbrücken LAPLAMBERT Academic Publishing. – 2015. – 468 с.

7. Гузь А.Н. Основы теории контактного взаимодействия упругих тел с начальными (остаточными) напряжениями [Текст]. / А.Н. Гузь, В.Б. Рудницкий // – Хмельницький, вид. ПП Мельник. – 2006. – 710 с.

8. Guz A.N. Elastic waves in bodies with initial (residual) stresses. /A.N. Guz// Int. Appl: Mech. – 2002. – 38(1). – Pp. 23–59. <https://doi.org/10.1023/A:1015379824503>.

9. Guz A. N. Mixed plane problems in linearized solid mechanics. Exact solutions. / A.N. Guz, I.A. Guz // Int. Appl. Mech. – 2004. – 40(1). – Pp. 1–29. <https://doi.org/10.1023/B:INAM.0000023808.08859.48>.

10. Guz A. N. The stability of the interface between two bodies compressed along interface cracks. 3. Exact solutions for the combined case of equal and unequal roots. / A.N. Guz, I.A. Guz // Int. Appl. Mech. – 2000. – 36(6). – Pp. 759 – 768. <https://doi.org/10.1007/BF02681983>.

11. Kappus R. Zur Elastizitätstheorie endlicher Verschiebungen / R Kappus // ZAMM. – 1939. – 19, №5. – p. 271 – 285, №6 – p. 344 – 361.
12. Гузь О.М. Контактна взаємодія пружних тіл з початковими напруженнями: Навчальний посібник. / О.М. Гузь, С.Ю. Бабич, В.Б. Рудницький // – К.: Вища школа. – 1995. – 304 с.
13. Guz A.N. Establishing the fundamentals of the theory of stability of mine workings. / A.N. Guz // Int. Appl. Mech. 2003. – 39(1). – Pp. 20–48. <https://doi.org/10.1023/A:1023659931802>.
14. Guz A.N. The physical fundamentals of the ultrasonic nondestructive stress analysis of solids. / A.N. Guz, F.G. Makhort // Int. Appl. Mech. – 2000. – 36(9). – Pp.1119–1149. <https://doi.org/10.1023/A:1009442132064>.
15. Babich S. Yu. Contact problems for prestressed elastic bodies and rigid and elastic punches. / S.Yu. Babich, A.N. Guz, V.B. Rudnitsky // Int. Appl. Mech. – 2004. – 40(7). – Pp. 744 – 765. <https://doi.org/10.1023/B:INAM.0000046219.34646.4e>.
16. Gabruseva I.Yu. Contact interaction of circular punch with prestressed isotropic layer. / I.Yu. Gabruseva, B.G. Shelestovsky // Mathematical methods and physico-mechanical fields. – 2011. – 54(3). – Pp. 138–146.
17. Yaretskaya, N. A. Three-Dimensional Contact Problem for an Elastic Layer and a Cylindrical Punch with Prestresses / N. A. Yaretskaya // International Applied Mechanics. – 2014. – 50(4). – Pp. 378–388. <https://doi.org/10.1007/s10778-014-0641-y>
18. Yaretska N.O. Pressure of the stiff cylindrical annular punch on semispace with initial (residual) stresses. / N. O. Yaretska // Visnyk of Zaporizhzhya National University. Physical and Mathematical Sciences – 2017. – №1. – s. 374 – 380.
19. Babich S.Yu. Contact problems for elastic bodies with initial stresses: Focus on Ukrainian research. / S.Yu. Babich, A.N. Guz, V.B. Rudnitsky // Appl. Mech. Reviews. – 1998. – 51(5). – Pp. 343- 371. doi:10.1115/1.3099009.
20. Neuber H. Theorie der elastischen Stabilität bei nichtlinearer Vorverformung. / H. Neuber // Acta mech. – 1965. – 1(3). – Pp. 112-143.

21. Aleksandrov V. M. Contact problems for prestressed deformed bodies. / V. M. Aleksandrov, N. Ky. Arutyunyan // Soviet Applied Mechanics. – 1984. – 20(3). – Pp. 209–215. <https://doi.org/10.1007/BF00883134>.

22. Vasu T.S. A Study of the Contact of an Elastic Layer-Substrate System Indented by a Long Rigid Cylinder Incorporating Surface Effects. / T.S. Vasu, T.K. Bhandakkar // Journal of Applied Mechanics. – 2016. – 83(6). – Pp. 061009. doi:10.1115/1.4033079.

23. Long J. General Relations of Indentations on Solids With Surface Tension. / J. Long, Y. Ding, W. Yuan, W. Chen, G. Wang // Journal of Applied Mechanics. – 2017. – 84, №5. – p. 051007, Paper No: JAM-17-1002. doi:10.1115/1.4036214.

24. Zheng P. Dynamic Green's Functions and Integral Equations for a Double-Porosity Dual-Permeability Poroelastic Material. / P. Zheng, A.H.-D. Cheng, H. Li // Journal of Applied Mechanics. – 2017. – 84, №6. – p. 061009, Paper No: JAM-17-1049. doi:10.1115/1.4036439.

25. Развитие теории контактных задач в СССР / под ред. Л. А. Галина. – М.: Наука, 1976. – 494 с.

26. Грилицкий Д.В. Осесимметричные контактные задачи теории упругости и термоупругости. / Д.В. Грилицкий, Я.М. Кизыма // – Львов: Вища школа, 1981. – 136 с.